

TempTrust™ Pre-Qualified EPS Packaging Solution

Efficient, cost-effective solutions fully qualified to the ISTA 7E Standard

Durable cold chain packaging for a low cost-per-use

The TempTrust Standard EPS packaging solution is designed to not only withstand the rigors of your shipping environment, but is sufficiently durable to be used repeatedly to provide a rapid return on investment and a lower cost-per-trip.



Beyond Pre-Qualified

Mesa Labs has analyzed transportation modes in North America for over 10 years and documented thousands of data points across all major origins and destinations. This expertise enables the company to offer solutions that exceed all industry standards, reduces failures and cut total-cost-of-ownership.

Our ISTA® Transit Tested Certification Mark proves the certified package meets the ISTA standard and the package is adequately protected against drop, vibration, compression and/or atmospheric hazards proven to exist in the transit environment.

Ten years of transportation data and ISTA certification benefit you by enabling your products go to market faster by eliminating the need for multiple trial shipments.

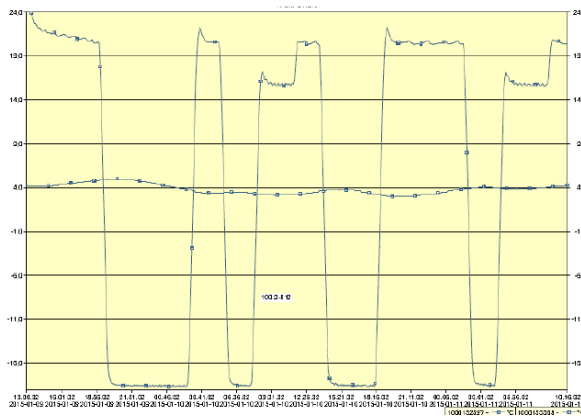
The Mesa packaging design and testing center is one of the few fully ISTA 7E, Standard 20 compliant facilities in North America that has the ability to certify packaging with the ISTA certified mark.

Key Features

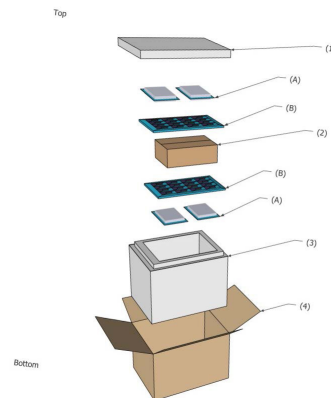
- Use less refrigerant
- Reduce container weight
- Optimize gel pack conditioning
- Minimize pack-out failures
- Durable and recyclable
- Fast time-to-market
- Developed & qualified to surpass key regulatory standards

System Qualification

Every packaging solution is fully pre-qualified against specific temperature profiles that take into account your transportation processes and geographical region. Each include qualification documentation from ISTA certified laboratory, pack-out diagrams and SOPs.



The sample data set demonstrates a qualification study for a 48 hour payload.



All pre-qualified solutions include both testing documentation and SOPs with pack-out diagrams.

Specifications and Ordering Details

Each solution includes paper corrugate outer container, EPS insulated container, gel pack and/or gel blankets. Prequalified solutions also include SOPs and qualification data. Below are the available options:

Model	Payload Capacity (liters)	Payload Inner Dimensions (inches)	Package Outer Dimensions (inches)	Durations Available (hours)				Prequalified Temps Available		Seasonal Pack-outs Available	System Tare Weight
				24	36	48	72	2 to 8	15 to 25		
147	1.5	7.25 x 5 x 2.5	10.5 x 8.25 x 8.5					x	x	I, S	4 to 5.2 lbs
092	2.5	6.6 x 6.25 x 3.75	13.25 x 11.5 x 11.5					x	x	I, S, W	7.7 to 10.5 lbs
050	4.4	8.5 x 7.5 x 4.25	15 x 11.6 x 11.8					x	x	I, S, W	13.6 lbs
071	6.8	10 x 7.5 x 5.5	13.75 x 13.75 x 12					x	x	I, S, W	16 to 19 lbs
100	14.5	14 x 9 x 7	18.12 x 13.5 x 15					x	x	I, S, W	14 to 19.6 lbs
135	28.8	16 x 11 x 10	22.13 x 16.9 x 10					x	x	I, S, W	28.8 to 34.4 lbs
073	48.8	21.6 x 14.1 x 9.75	26.37 x 20.5 x 20.25					x	x	I, S, W	29 to 41 lbs

Seasonal Pack-outs: S = Summer, I = Intermediate, W = Winter

*Tare weight can vary based on configuration

In addition to EPS solutions, the TempTrust portfolio includes PUR, ePUR and rugged solutions. Contact us for details.

TempTrust was developed by Infitrak, trusted leader in cold chain management

Since 2002, Infitrak has designed and developed comprehensive cold-chain solutions that protect a product's integrity and ensures patient and consumer safety. InfiTrak is now a part of Mesa Labs.