

# TempTrust™ Pre-Qualified, EPS Packaging Solutions

Efficient, cost-effective solutions fully qualified to the ISTA 7E Standard

TempTrust Pre-Qualified, EPS Packaging

## Durable Cold Chain Packaging with a Low Cost-Per-Use

The TempTrust Standard EPS packaging solution is designed to not only withstand the rigors of your shipping environment, but is sufficiently durable to be used repeatedly to provide a rapid return on investment and a lower cost-per-trip.

## Beyond Pre-Qualified

Mesa Labs has analyzed transportation modes in North America for over 10 years and documented thousands of data points across all major origins and destinations. This expertise enables the company to offer solutions that exceed all industry standards, reduces failures and cut total-cost-of-ownership.

Our ISTA® Transit Tested Certification Mark proves the certified package meets the ISTA standard and the package is adequately protected against drop, vibration, compression and/or atmospheric hazards proven to exist in the transit environment.

Ten years of transportation data and ISTA certification benefit you by enabling your products go to market faster by eliminating the need for multiple trial shipments.

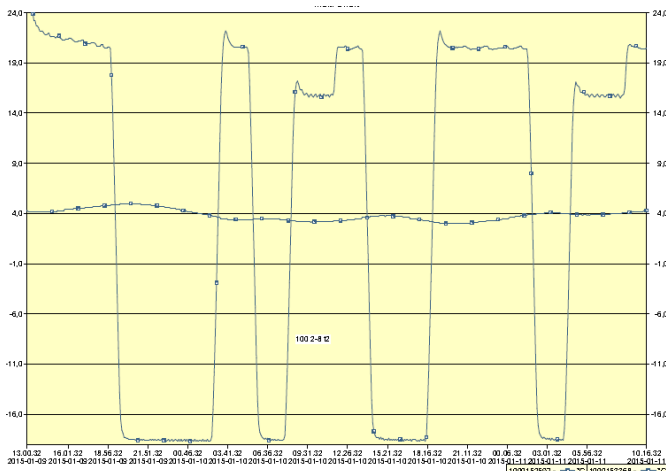
**The Mesa packaging design and testing center is one of the few fully ISTA 7E, Standard 20 compliant facilities in North America with the ability to certify customer packaging with the ISTA certified mark.**

## Key Features

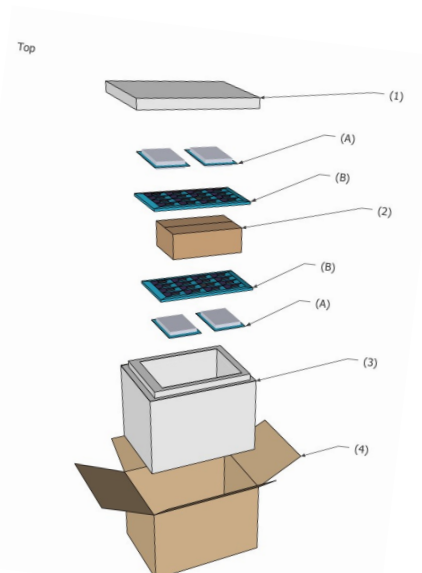
- Use less refrigerant
- Reduce container weight
- Optimize gel pack conditioning
- Minimize pack-out failures
- Durable and recyclable
- Fast time-to-market
- Developed & qualified to surpass key regulatory standards

## System Qualification

Every packaging solution is fully pre-qualified against specific temperature profiles that take into account your transportation processes and geographical region. Each include qualification



*The sample data set demonstrates a qualification study for a 48 hour payload.*



*All pre-qualified solutions include both testing documentation and SOPs with pack-out diagrams.*

# TempTrust Pre-Qualified, EPS Packaging Solutions

## Specifications and Ordering Details

Each solution includes paper corrugate outer container, EPS insulated container, gel pack and/or gel blankets. Prequalified solutions also include SOPs and qualification data. Below are the available options:

Model	Payload Capacity (Liters)	Payload Inner Dimensions (Inches)	Package Outer Dimensions (Inches)	Durations Available (hours)					Prequalified Temps Available (in C)			Seasonal Pack-outs Available	System Tare Weight (lb)
				2 4	3 6	4 8	7 2	9 6	-15 to -25	2 to 8	15 to 25		
147	1.5	7.25 x 5 x 2.5	10.5 x 8.25 x 8.5							x	x	S, I	4 to 5.2 lbs
092	2.5	6.6 x 6.25 x 3.75	13.25 x 11.5 x 11.5						x	x	x	S, I, W	7.7 to 10.5 lbs
050	4.4	9 x 5 x 6	15 x 11.6 x 11.8						x	x	x	S, I, W	13.6 lbs
071	6.8	10 x 7.5 x 5.5	13.75 x 13.75 x 12						x	x	x	S, I, W	16 to 19 lbs
27162	9.9	11.75 x 9.75 x 5.25	15 x 13 x 12						x	x	x	S, I, W	10.2 lbs
100	14.5	14 x 9 x 7	18.12 x 13.5 x 15						x	x	x	S, I, W	14 to 19.6 lbs
27058	18.7	11.75 x 11.75 x 8.25	15 x 15 x 15						x	x	x	S, I, W	13.8 lbs
135	28.8	16 x 11 x 10	22.13 x 16.9 x 10						x	x	x	S, I, W	28.8 to 34.4 lbs
27225	43.1	20.25 x 13 x 10	23.5 x 16.25 x 17						x	x	x	S, I, W	24.2 lbs
073	48.8	21.6 x 14.1 x 9.75	26.37 x 20.5 x 20.25						x	x	x	S, I, W	29 to 41 lbs

Seasonal Pack-outs: S = Summer, I = Intermediate, W = Winter,

\*Tare weight can vary based on configuration

In addition to EPS solutions, the TempTrust portfolio includes PUR, ePUR and rugged solutions. Contact us for details.

## Mesa Labs, a trusted leader in cold chain management since 2002

Since 2002 Infitrak, now Mesa Labs, has designed and developed comprehensive cold-chain solutions that protect a product's integrity and ensures patient and consumer safety. The company is an ISO 9001:2008 certified company and a ISTA 7E, Standard 20 certified laboratory, one of only a few in North America. Mesa Labs is also the only company with all three areas of compliance-based, temperature controlled services and products: packaging, consulting, and real-time monitoring. This translates into a team that is with you all the way from raw materials to end user.



For more information, visit us at [www.temptrust.mesalabs.com](http://www.temptrust.mesalabs.com).

Mesa Laboratories Canada  
3075 14th Ave #1  
Markham, ON L3R 5M1  
Canada

Mesa Laboratories US  
12100 W. 6th Avenue  
Lakewood, CO 80228  
USA

Phone: 905 470-1318  
Toll Free: 1-866-421-8367  
Fax: 416-767-9790  
[temptrust@mesalabs.com](mailto:temptrust@mesalabs.com)

